

# BACK OF HOUSE ELEVATOR GUIDE

**Resorts World**  
LAS VEGAS

**SEPTEMBER 10, 2020**



**CATERING AND CONFERENCE SERVICES**



## **Driving Directions to Resorts World Las Vegas Loading Docks**

Going North on Sammy Davis Jr.

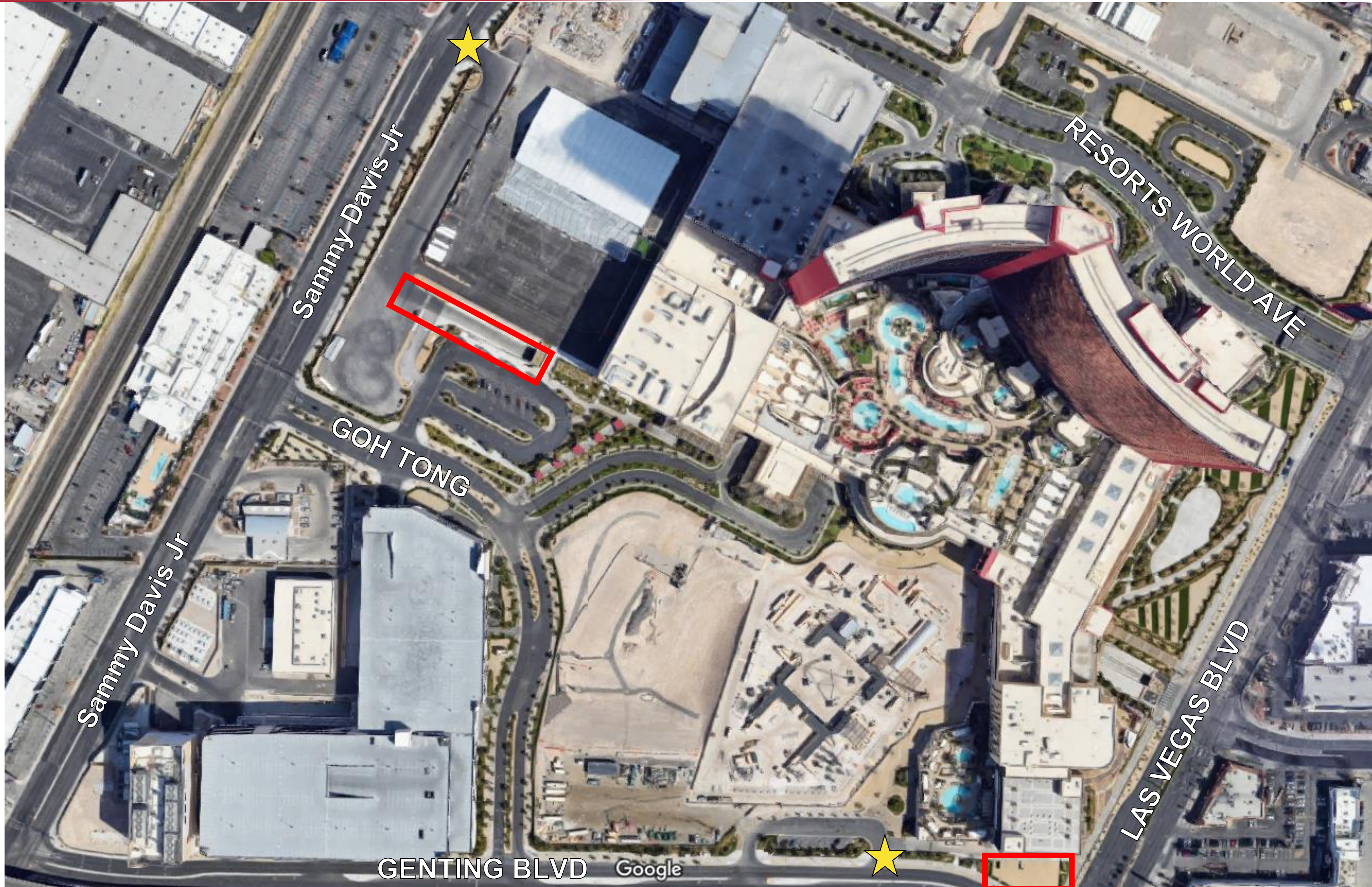
- Turn Right at Red Sign labeled 'hotel deliveries/vendors'
- Check in with security booth before entering ramp down into loading dock.
- The first Left takes you to main loading dock (Conference Center, Pool, Alle Lounge)
- Continue straight to the round-about to get to loading dock for Rose Ballroom, Rose Rooftop, Rose Terrace or East Garden Plaza

## **Driving Directions to Resorts World Zouk/AYU Loading Dock**

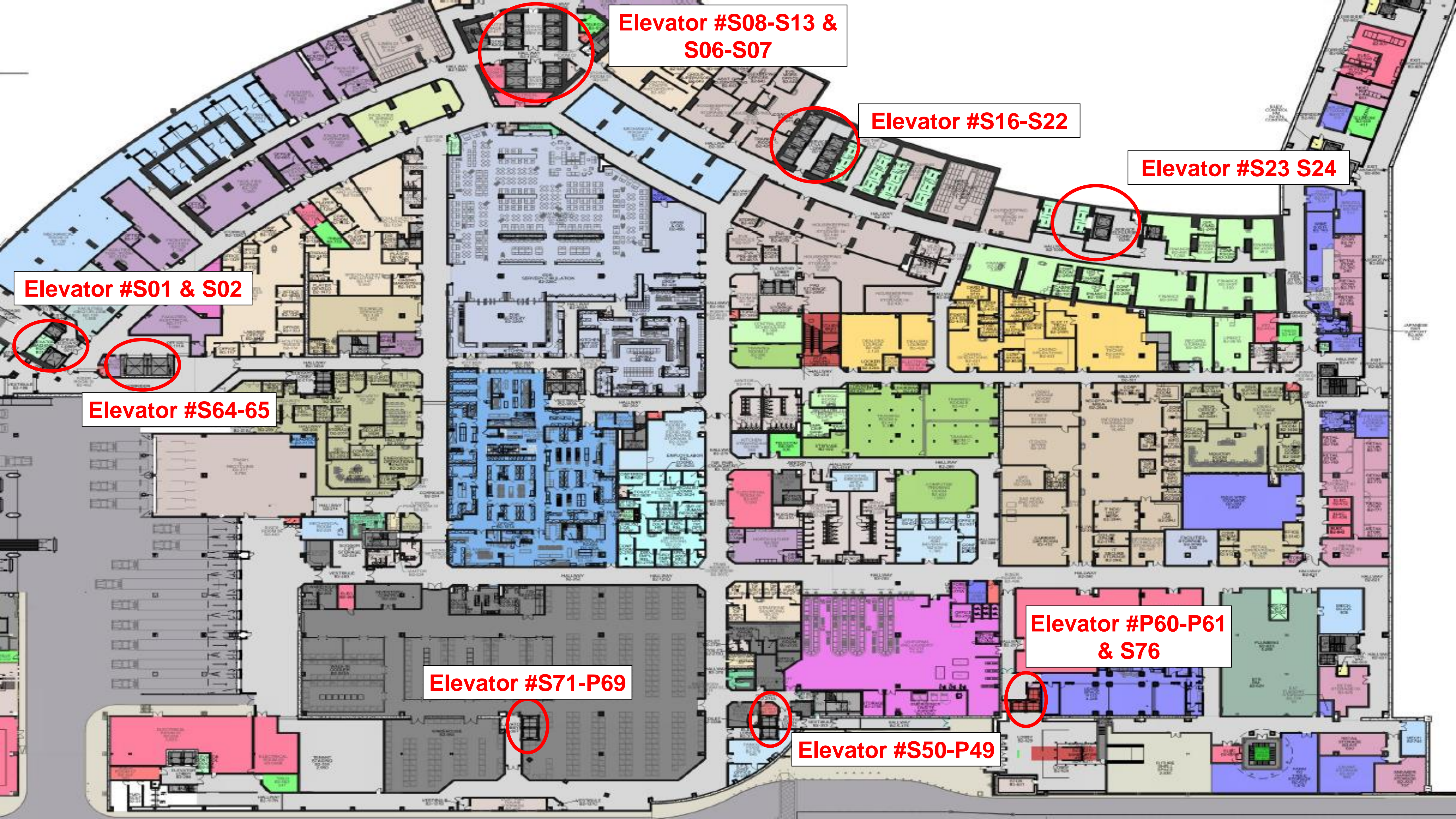
Going South on Las Vegas Blvd

- Turn Right at the Red Sign labeled AYU Valet/Drop Offs
- Continue down the paved road to the chain link gate, pull through to access Zouk Loading Dock

**YOU MUST COMPLETE THE VENDOR LOADING DOCK ACCESS FORM TO BE ALLOWED ENTRY**



★ = Dock Entrance  
▭ = Loading Dock



**Elevator #S08-S13 & S06-S07**

**Elevator #S16-S22**

**Elevator #S23 S24**

**Elevator #S01 & S02**

**Elevator #S64-65**

**Elevator #P60-P61 & S76**

**Elevator #S71-P69**

**Elevator #S50-P49**

**Elevator #S08-S13 & S06-S07**

**Elevator #S16-S22**

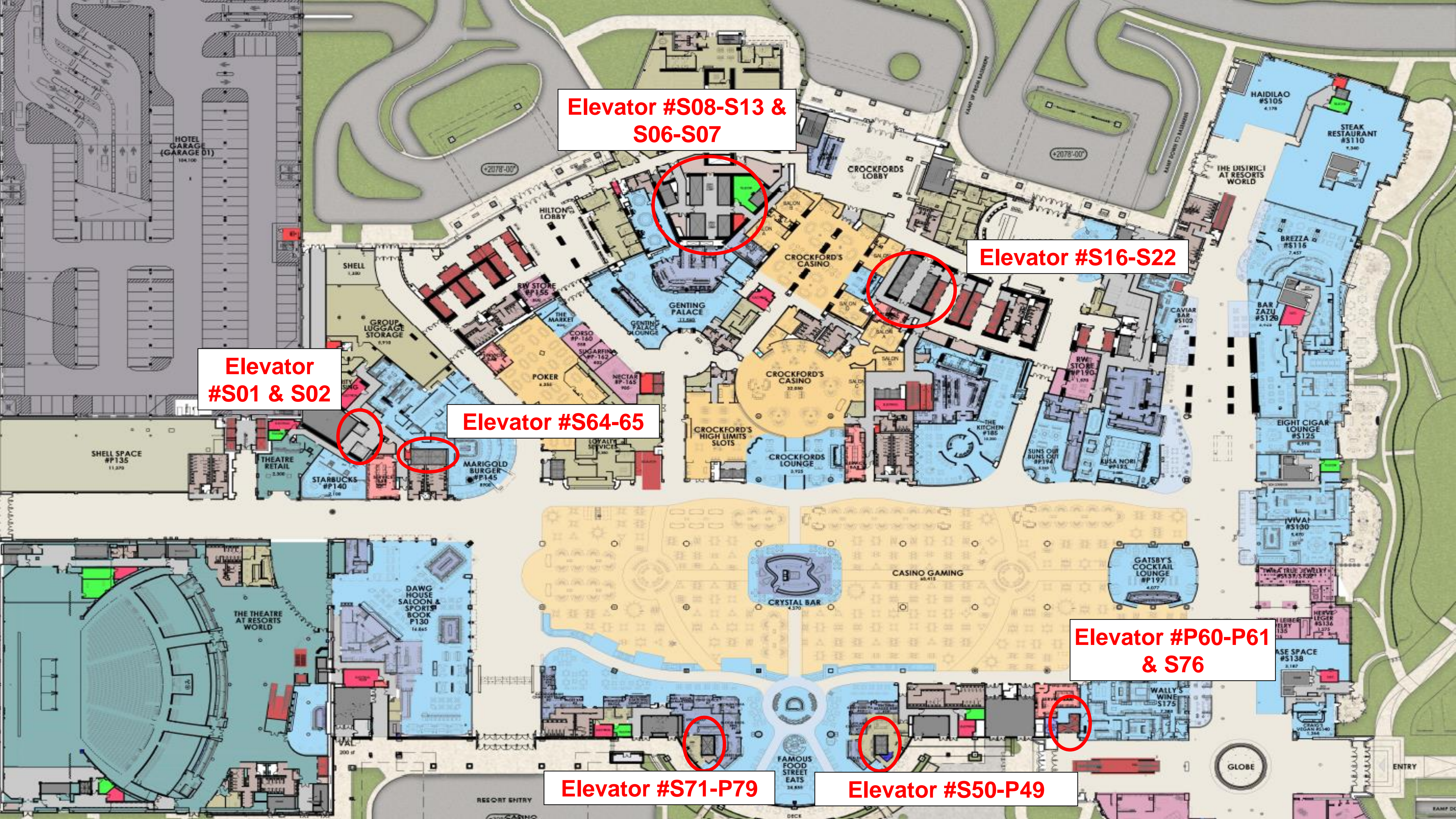
**Elevator #S01 & S02**

**Elevator #S64-65**

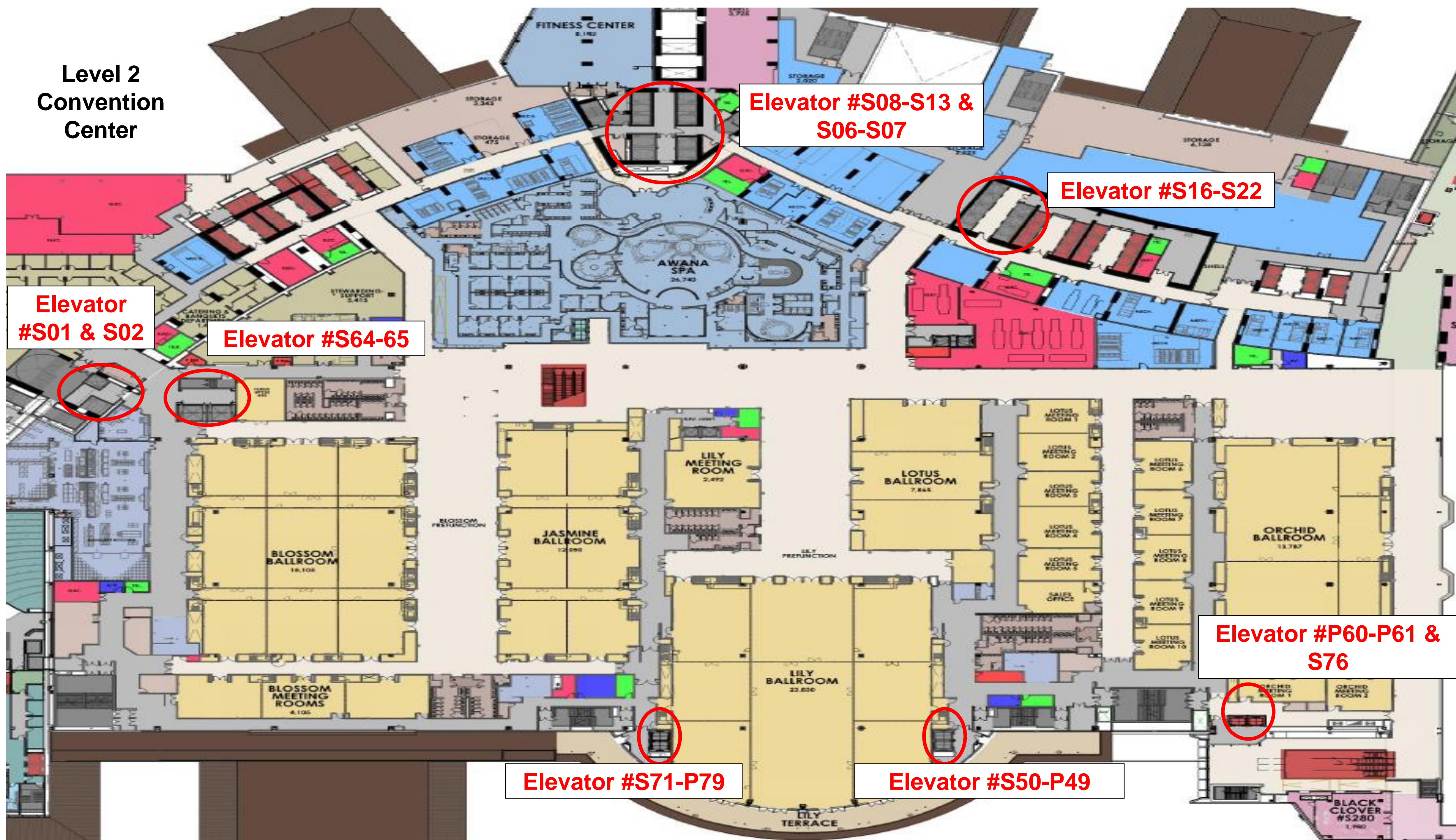
**Elevator #P60-P61 & S76**

**Elevator #S71-P79**

**Elevator #S50-P49**



**Level 2  
Convention  
Center**



**Elevator #S08-S13 & S06-S07**

**Elevator #S16-S22**

**Elevator #S01 & S02**

**Elevator #S64-65**

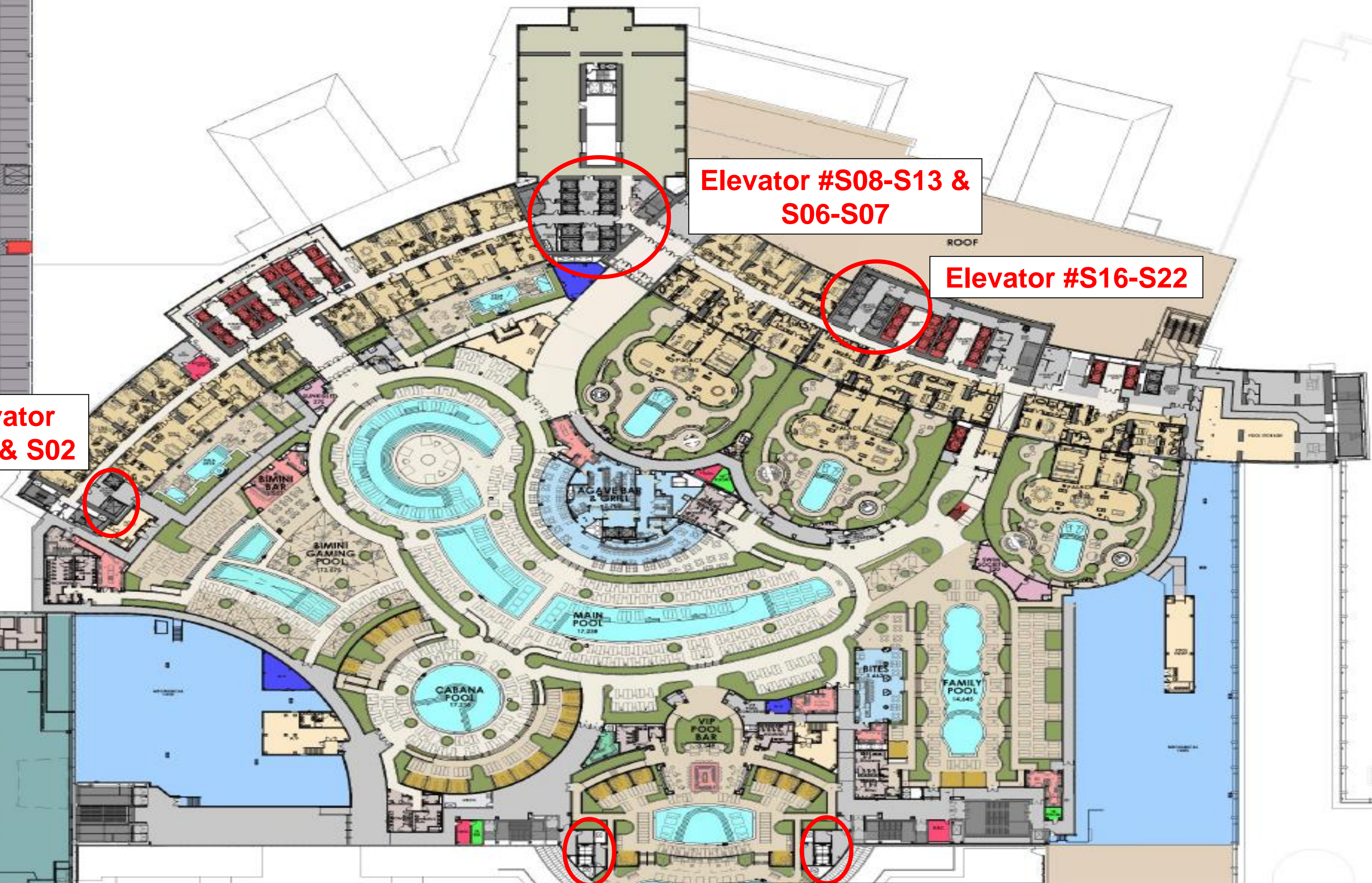
**Elevator #P60-P61 & S76**

**Elevator #S71-P79**

**Elevator #S50-P49**



**Elevator #S01 & S02**

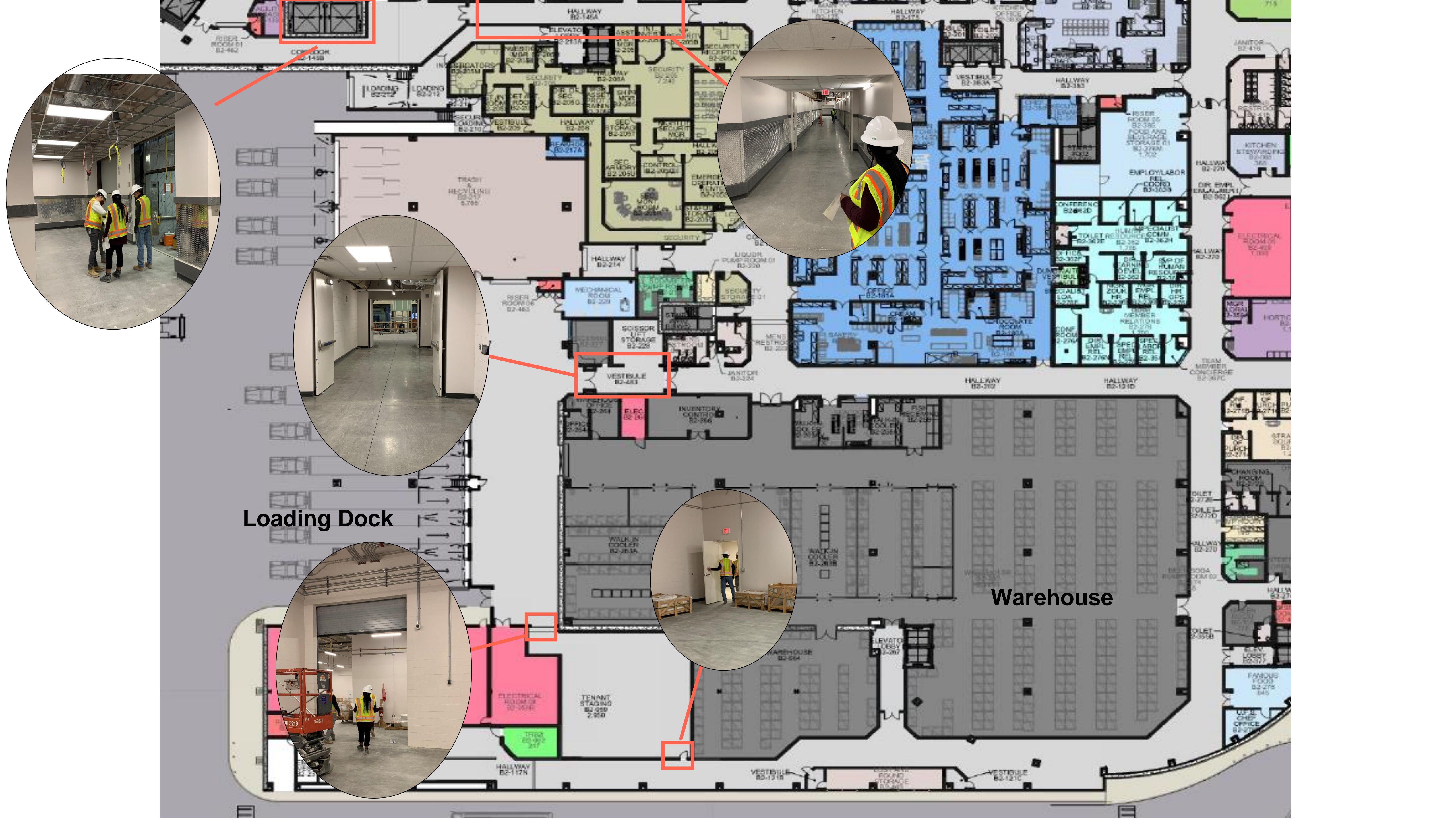


**Elevator #S08-S13 & S06-S07**

**Elevator #S16-S22**

**Elevator #S71-P79**

**Elevator #S50-P49**



Loading Dock

Warehouse



## Elevator #S64-65

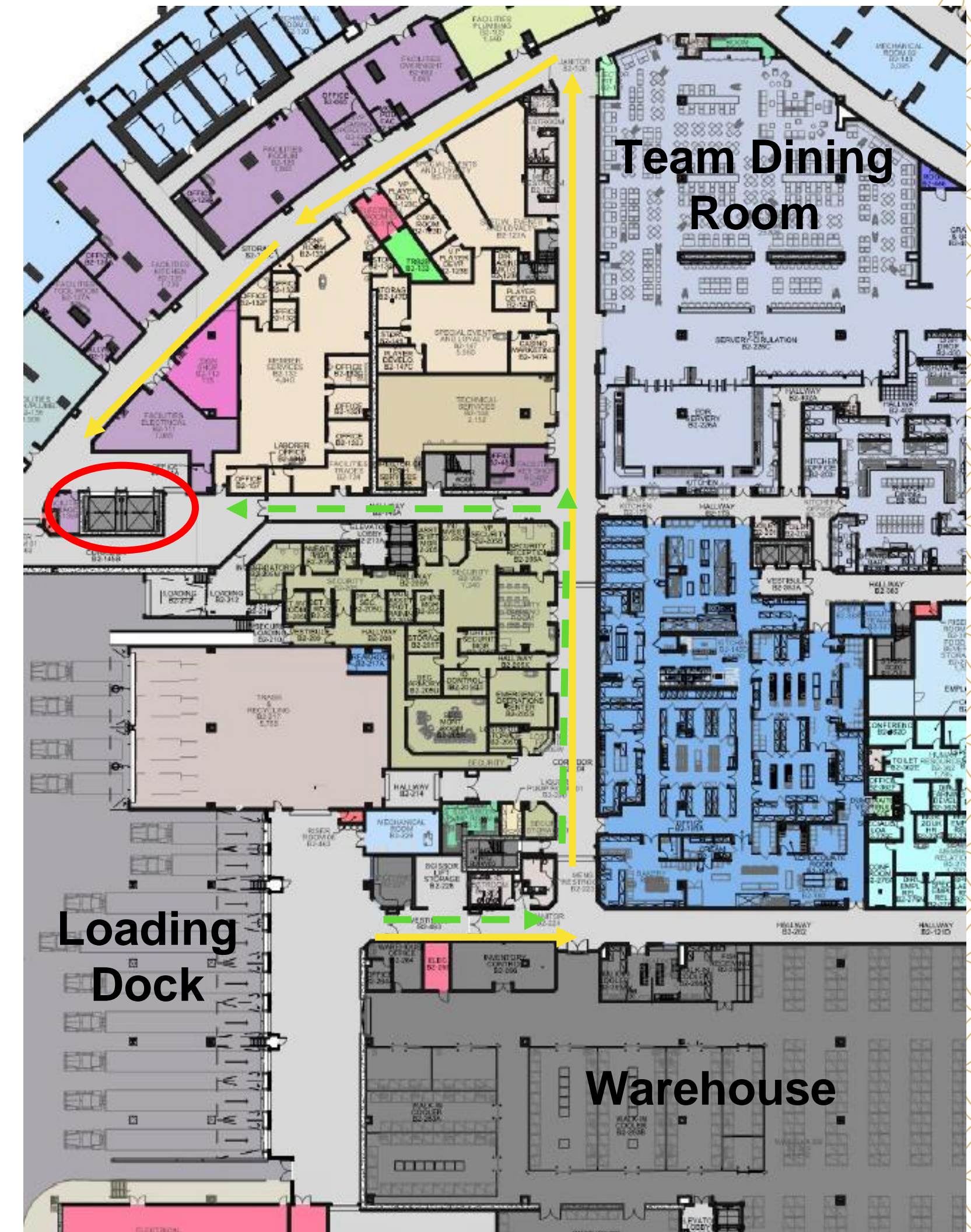
**Elevator Dimensions: 10'4" Width x 12'10 1/4" Deep x 10' Tall**

**Lowest Ceiling Height (Green Path): 7 1/2 ft**  
**Load in Distance: 575 ft**

**Lowest Ceiling Height (Yellow Path): 7 1/2 ft**  
**Load in Distance: 725ft distance (wider hallway)**

**Access to:** Blossom Ballroom, Blossom Meeting Rooms, Jasmine Ballroom, Lily Ballroom, Lily Meeting Room, Dawg House

**Drops Closest to:** Business Center / Blossom Ballroom



Yellow line: wide load in  
Green dash line: narrow load in

## Elevator #S71

**Elevator Dimensions:**  
5' 9½" wide x 7' 5 5/8" deep x 9' 7" tall

**Lowest Ceiling Height (Yellow Path):** 7ft

**Load in Distance:** 300ft

**Drops Closest to:** Lily Ballroom, Lily Meeting Room, Jasmine Ballroom, Famous Foods, Casino Floor

## Elevator #P69

**Elevator Dimensions:**  
5' 9½" wide x 8' 10 5/8" deep x 9' 7" tall



# Elevator #S50

**Elevator Dimensions:**  
 5' 9 1/2" wide x 7' 5 5/8" deep x 9' 7" tall

# Elevator #P49

**Elevator Dimensions:**  
 5' 9 1/2" wide x 7' 5 5/8" deep x 9' 7" tall

**Lowest Ceiling Height (Yellow Path):** 7 ft

**Load in Distance:** 444 ft

**Drops Closest to:** Lily Ballroom, Lotus Ballroom, Lotus Meeting Rooms, Orchid Ballroom



## Elevator #S76

**Elevator Dimensions:**  
6' 9 1/2" wide x 5' 5/8" deep x 9' 7" tall

**Lowest Ceiling Height (Yellow Path):** 6 1/2 ft

**Load in Distance:** 555 ft

**Direct Access to:** Wally's Wine



## Elevator #S01

**Elevator Dimensions:**  
7' 9" wide x 9' 1" deep x 10' tall

**Lowest Ceiling Height (Yellow Path):** 7 ½ ft

**Load in Distance:** 750 ft

**Drops Closest to:** Blossom Ballroom

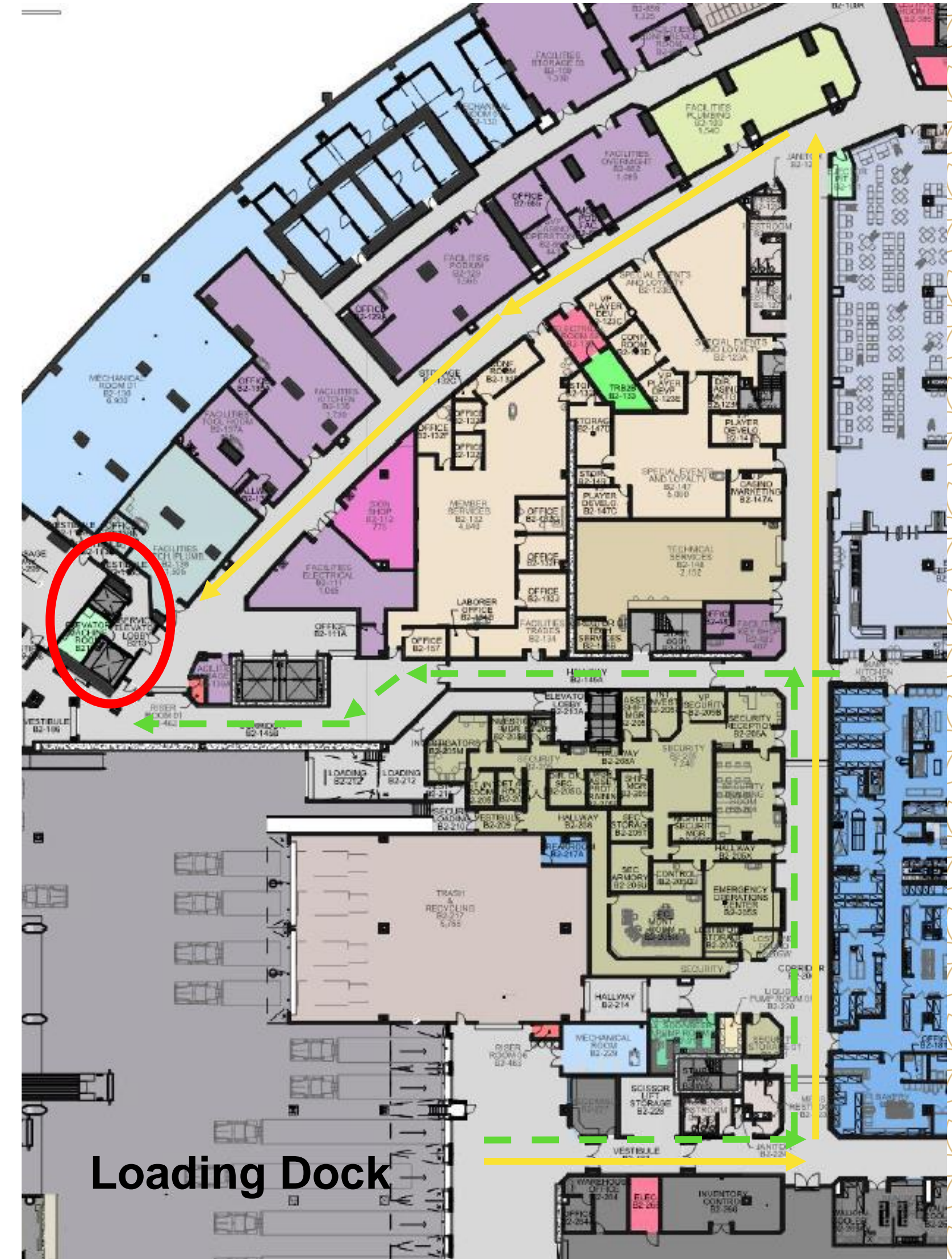
## Elevator #S02

**Elevator Dimensions:**  
6' 9 ½" wide x 5' 5/8" deep x 9' 7" tall

**Lowest Ceiling Height (Green Path):** 7 ½ ft

**Load in Distance:** 600 ft

**Drops Closest to:** Blossom Ballroom



**Loading Dock**

—————▶ Yellow line: wide load in  
- - - - -▶ Green dash line: narrow load in

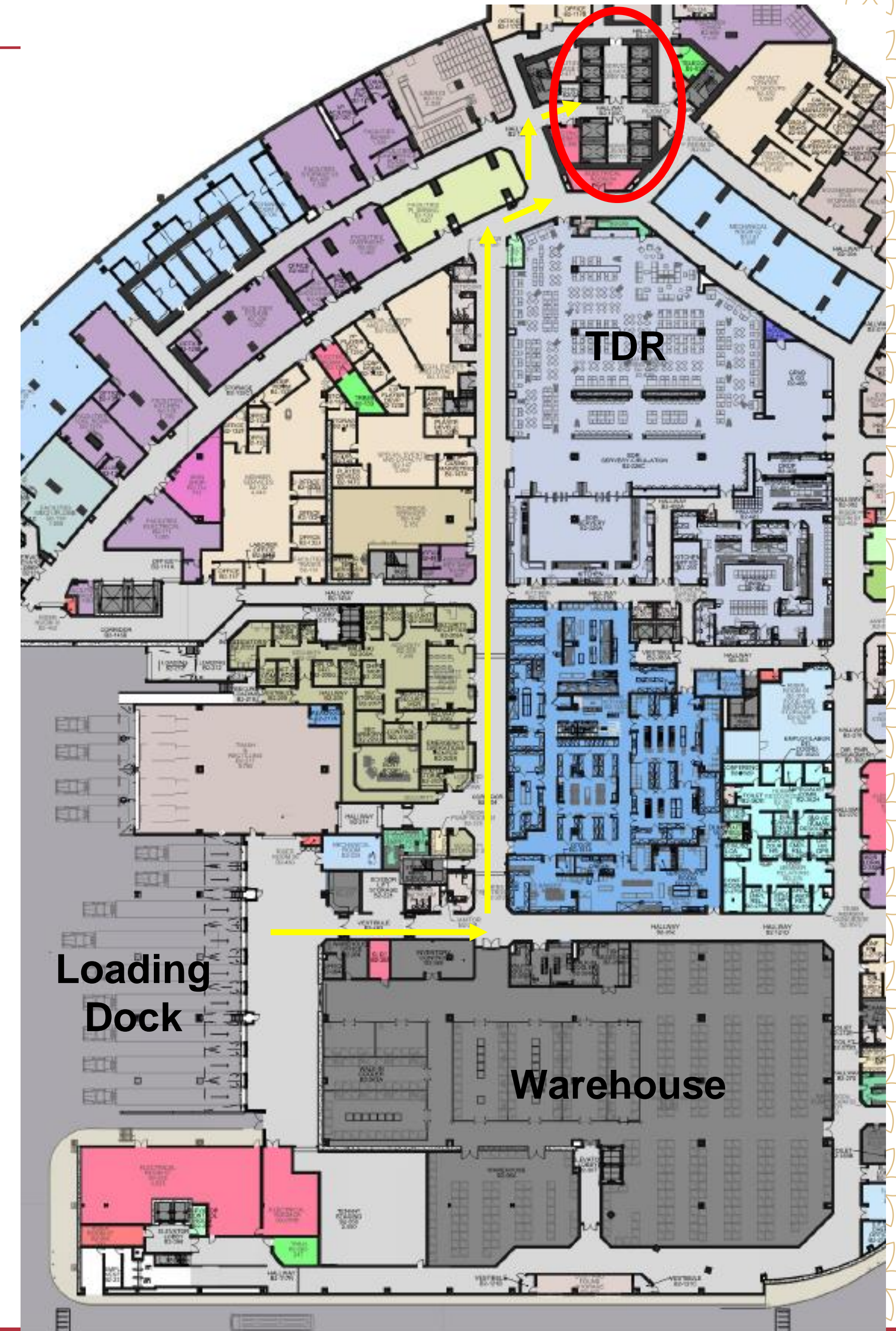
## Elevator #S08-S13 & S06-S07

Elevator Dimensions: **8'4" deep x 5'4" width x 10' height**

Lowest Ceiling Height (Yellow Path): 7'

Load in Distance: 538'

Direct Access to: Hotel Guest Rooms



## Elevator #S16-S22

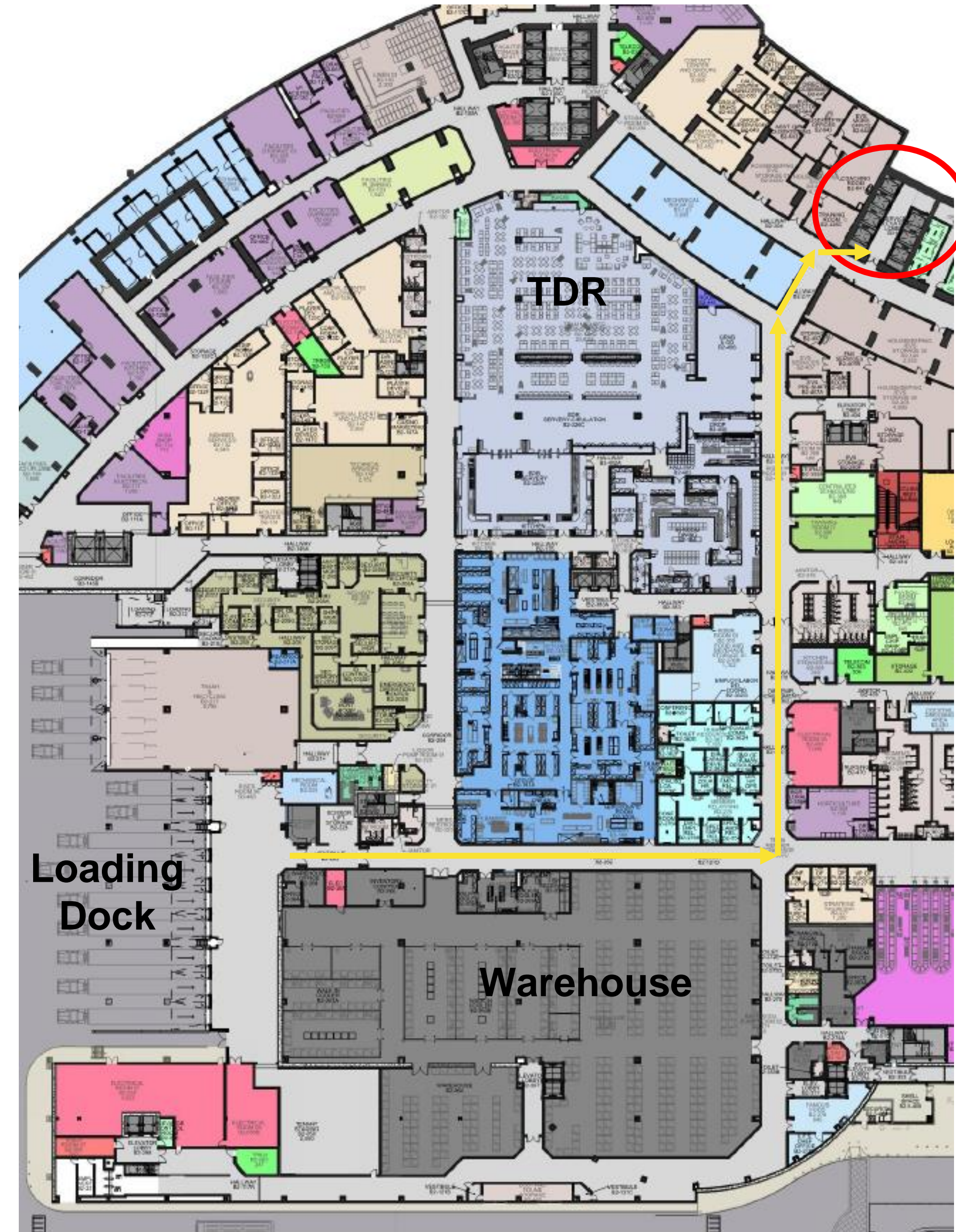
Elevator Dimensions: **7'6" deep x 5'3" wide x 10' high**

Lowest Ceiling Height (Yellow Path): **7 ½ ft**

Load in Distance: **585'**

Access to: Conrad and Crockfords Lobby, Pool Palaces

Notes: Must pass through 6' wide door width





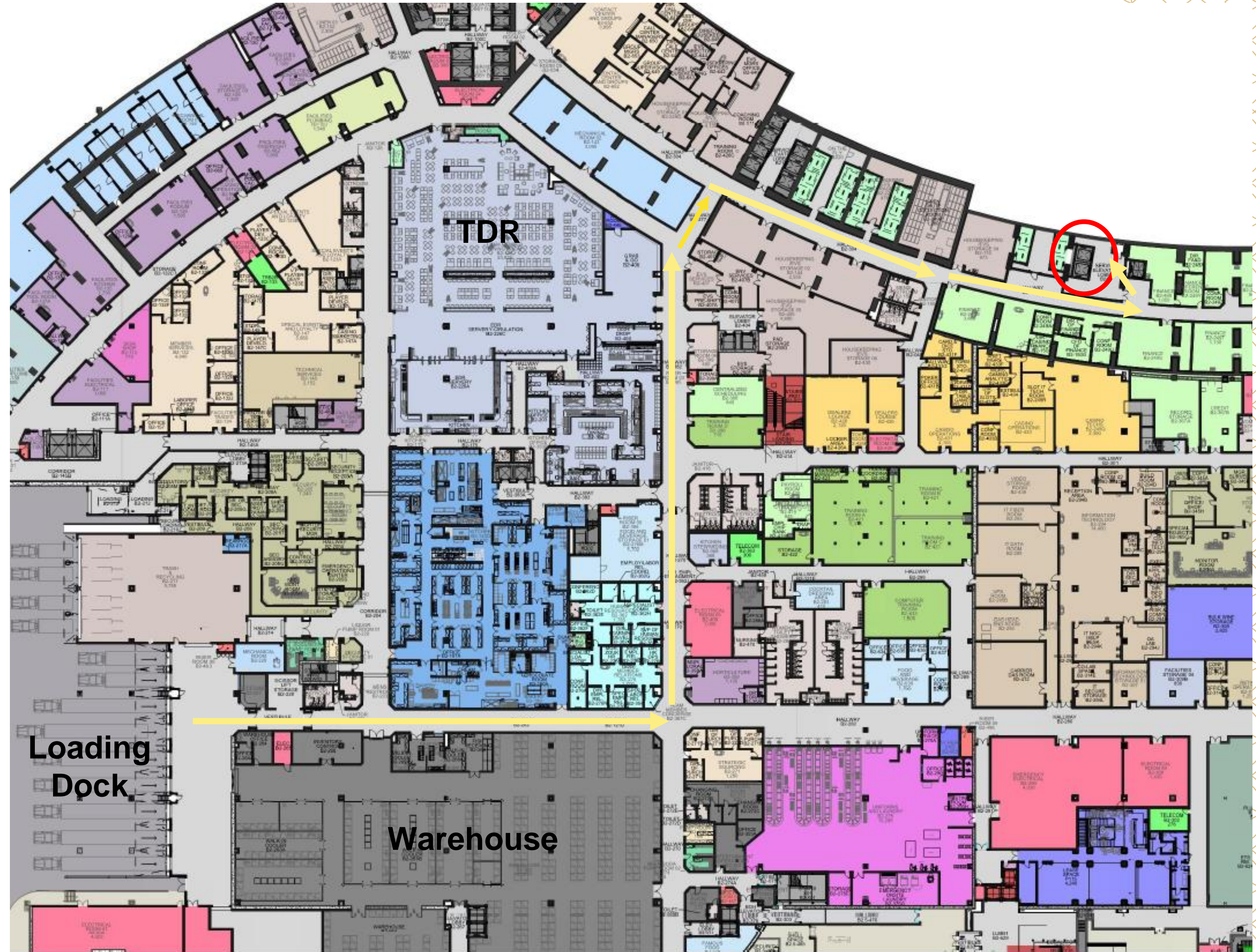
## Elevator #S23 – S24

Elevator Dimensions: 7' 9" width x 9'1" deep x 10' tall

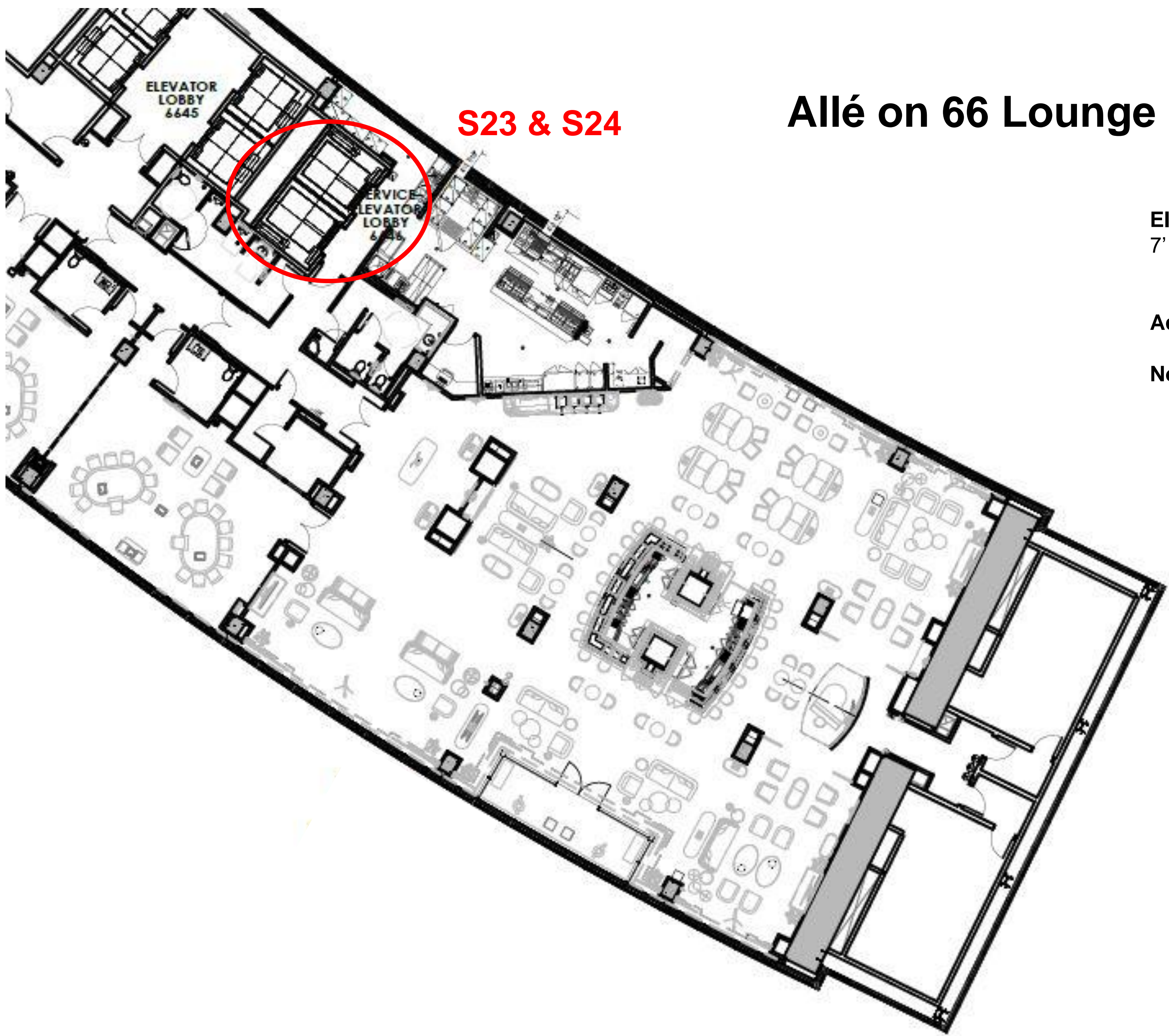
Lowest Ceiling Height (Yellow Path): 7 ½ ft  
Load in Distance: **820'**

Access to: Alle on 66<sup>th</sup>, Sky Casino

Notes: Must pass through 6' door width







**S23 & S24**

## Allé on 66 Lounge

**Elevator #S23-24 Dimensions:**  
7' 9" width x 9'1" deep x 10' tall

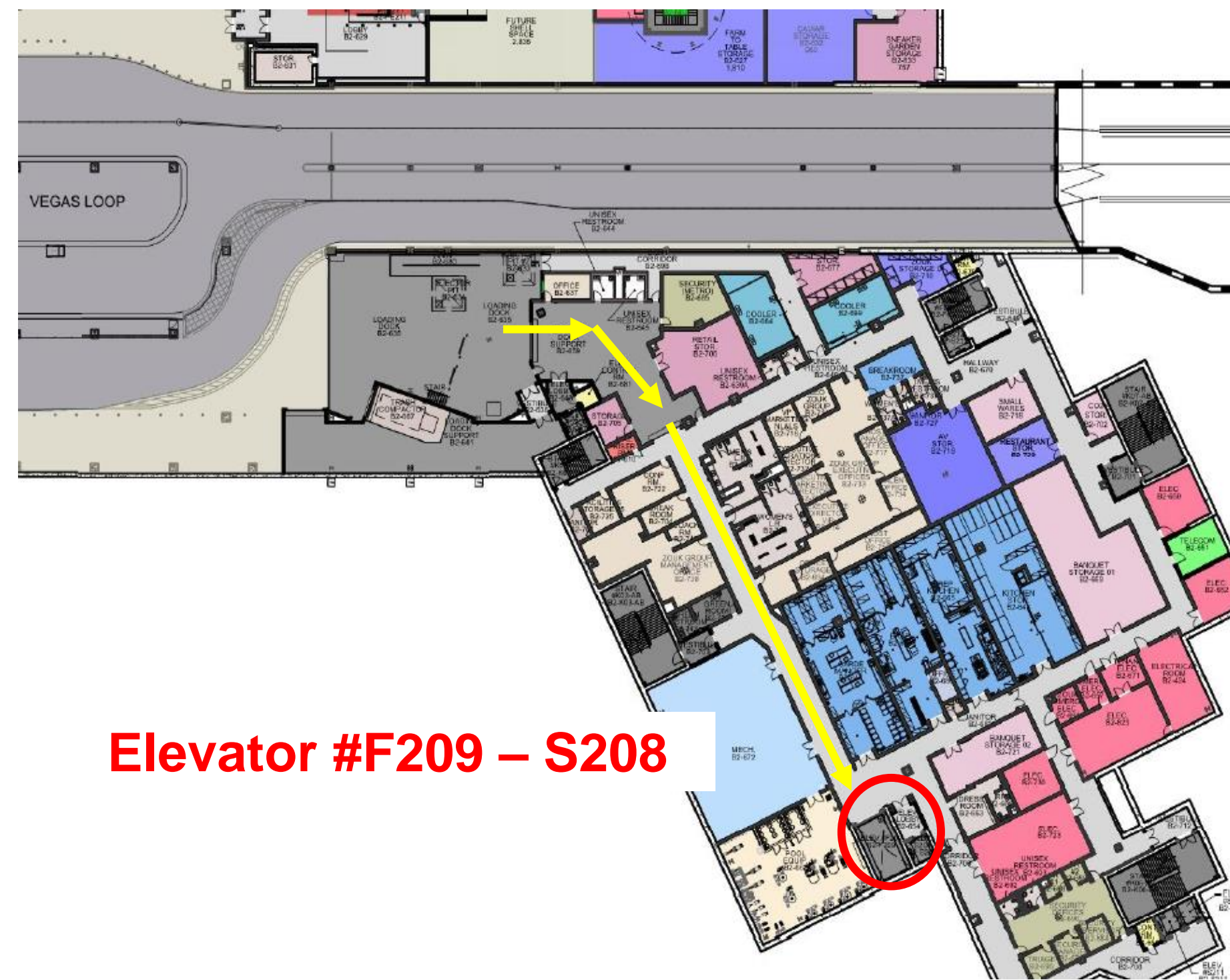
**Access to:** Alle on 66<sup>th</sup>, Sky Casino

**Notes:** Must pass through narrow 3.5'-4' doorways

# Basement Loading Area

# Level 3 – Rose Ballroom

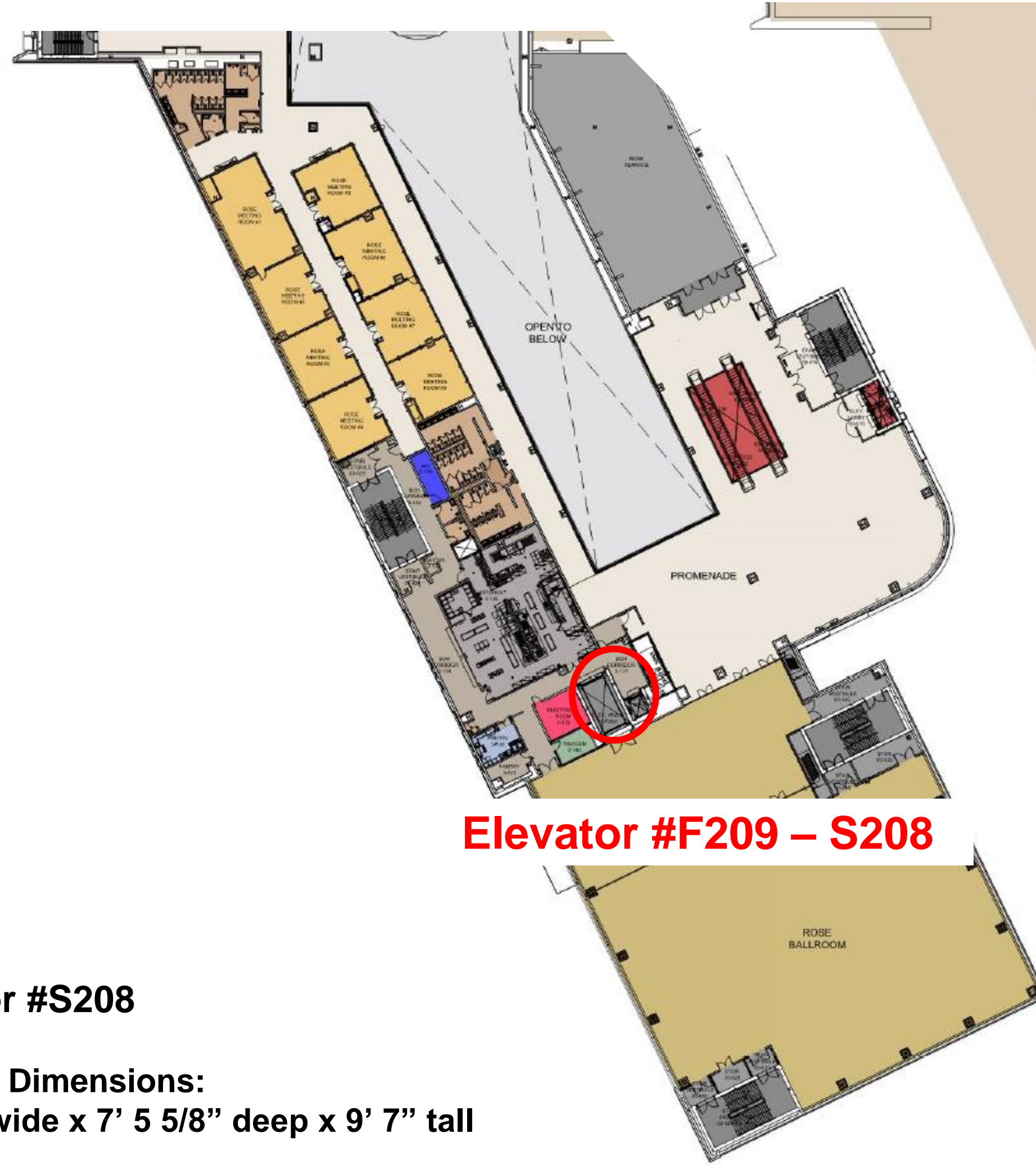
# Level 6 – Rose Rooftop



**Elevator #F209 – S208**

**Elevator #F209**

**Elevator Dimensions:  
9' 6" wide x 26' deep x 10' tall**



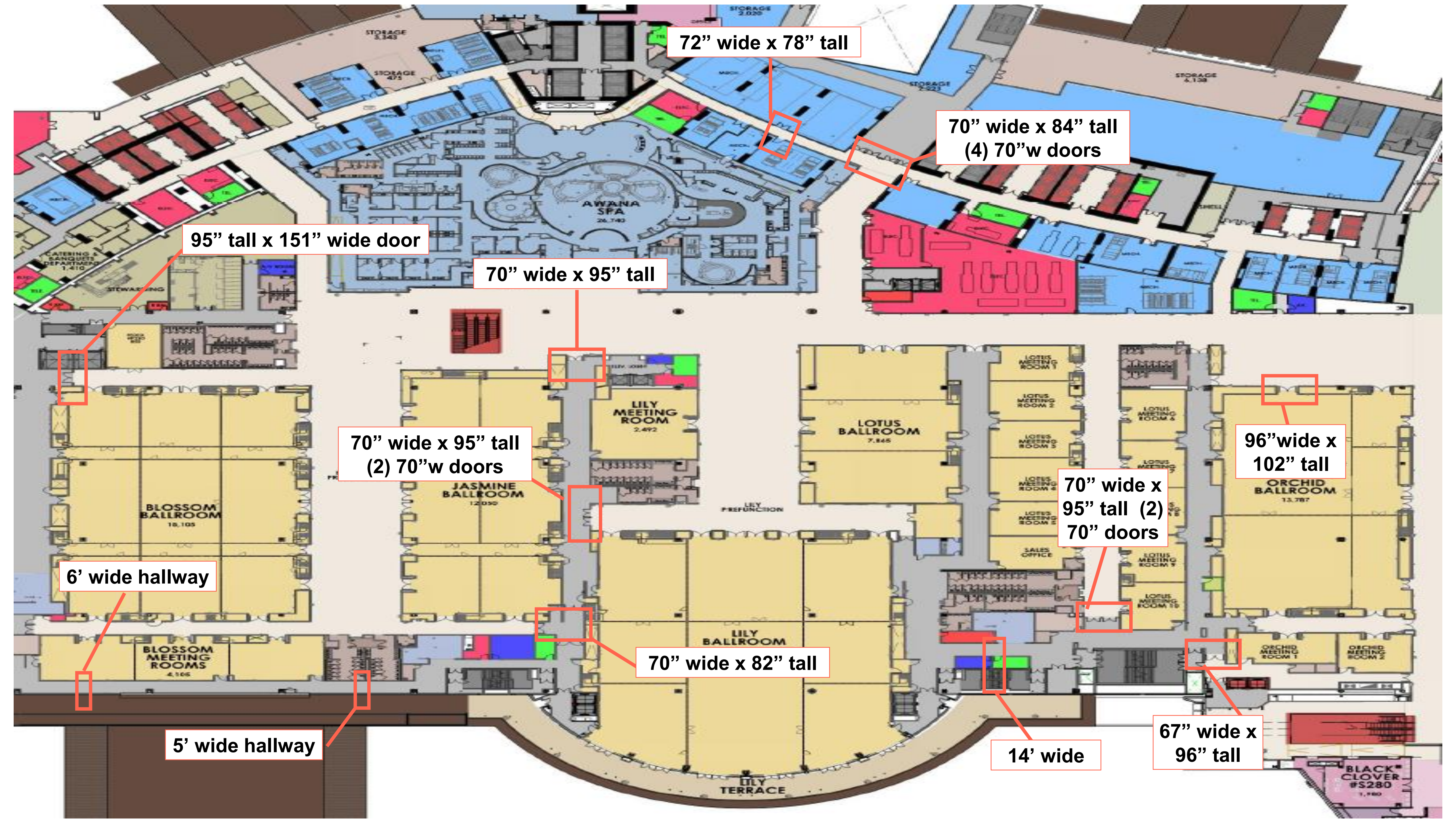
**Elevator #F209 – S208**

**Elevator #S208**

**Elevator Dimensions:  
5' 9 1/2" wide x 7' 5 5/8" deep x 9' 7" tall**



**Elevator #F209 – S208**



72" wide x 78" tall

70" wide x 84" tall  
(4) 70"w doors

95" tall x 151" wide door

70" wide x 95" tall

70" wide x 95" tall  
(2) 70"w doors

96" wide x 102" tall

70" wide x 95" tall (2)  
70" doors

6' wide hallway

70" wide x 82" tall

5' wide hallway

14' wide

67" wide x 96" tall

BLACK CLOVER #S280 1,180

### S64/65 Freight Elevators

- to **A** :325'
- to **B** : 730'
- to **C** : 668'
- to **D** :748'

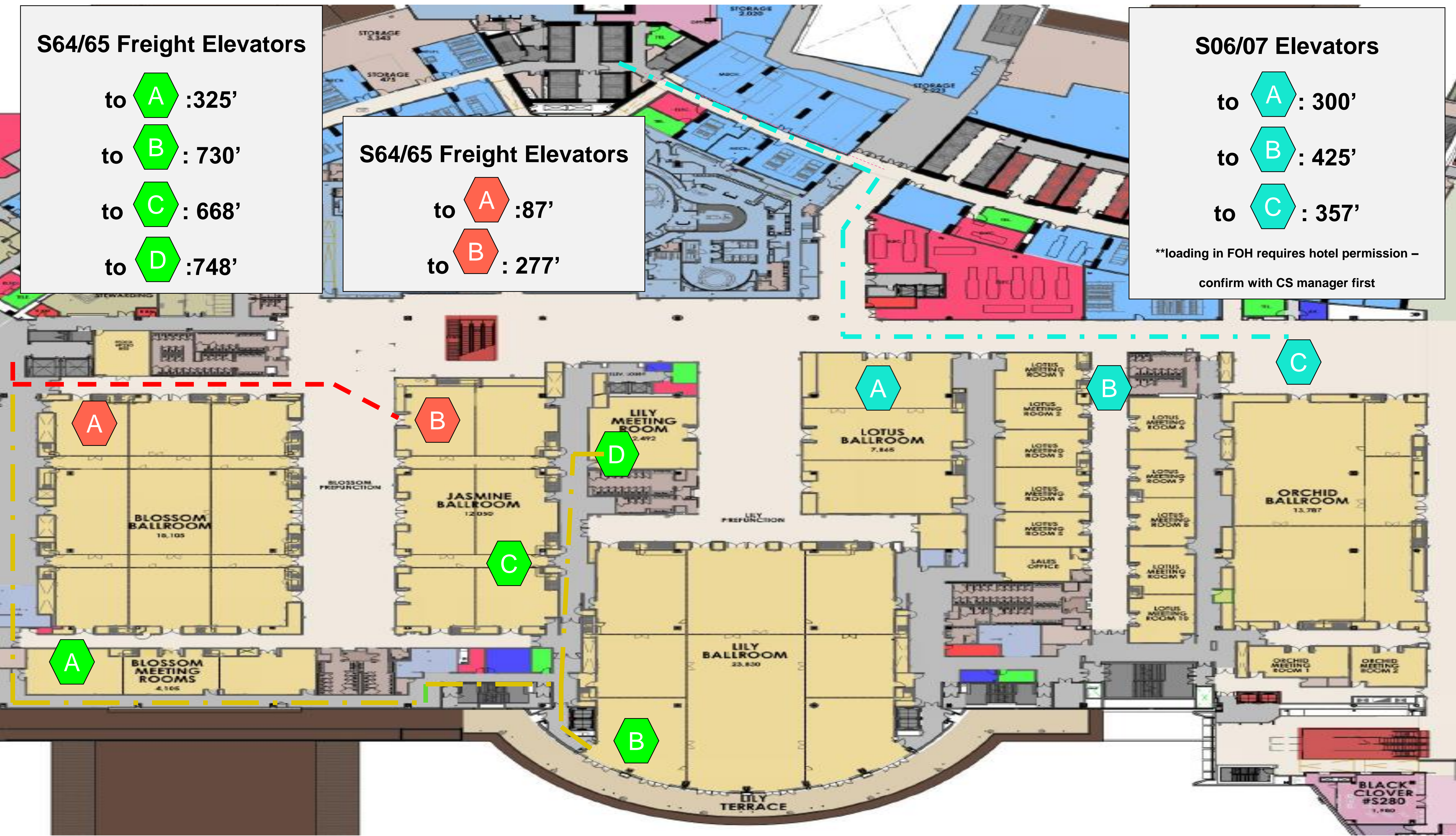
### S64/65 Freight Elevators

- to **A** :87'
- to **B** : 277'

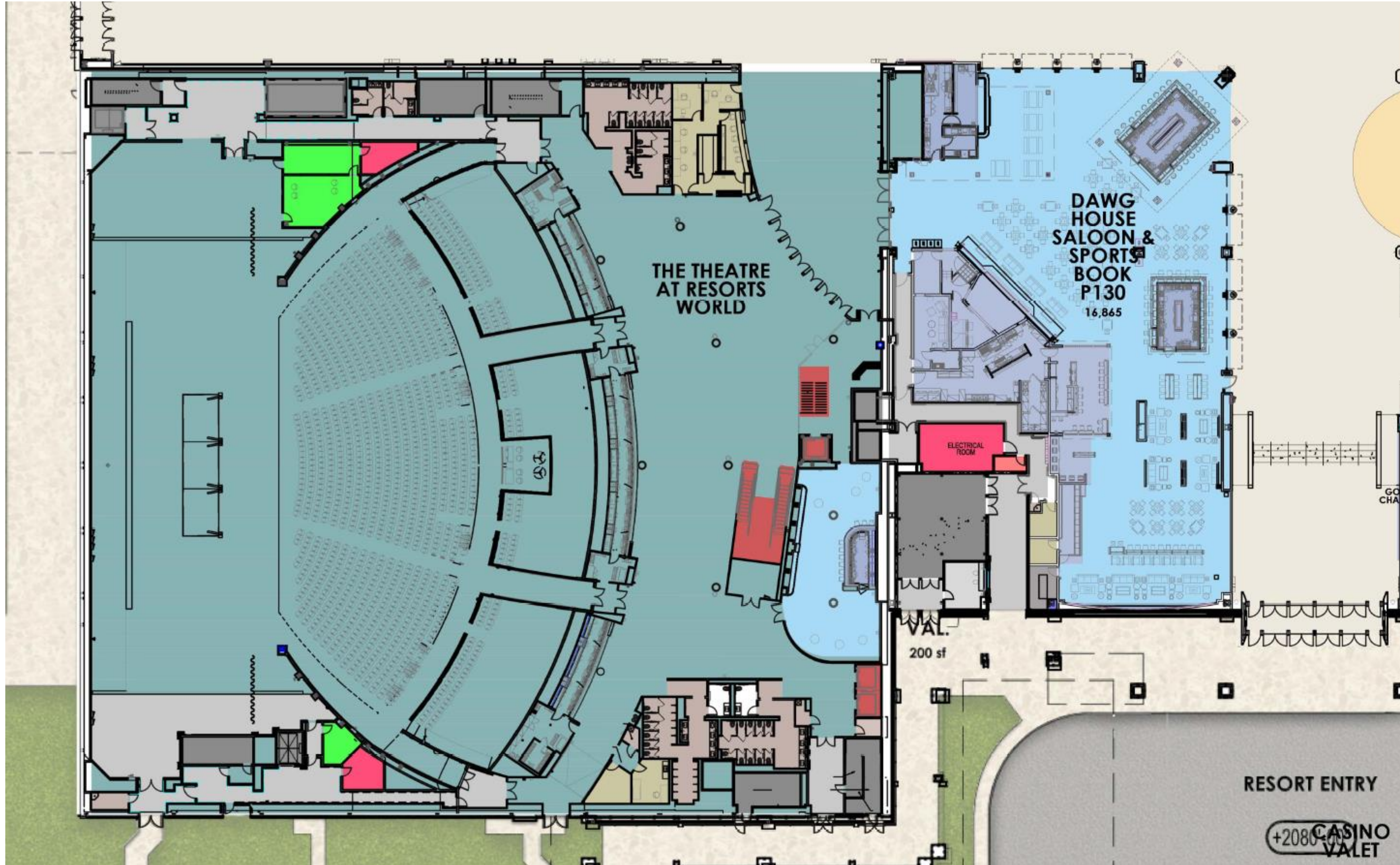
### S06/07 Elevators

- to **A** : 300'
- to **B** : 425'
- to **C** : 357'

\*\*loading in FOH requires hotel permission - confirm with CS manager first



# Resorts World Theater



## Encore Team Contact Information

<b>Dean Rader</b>	<b>Director of Event Technologies</b>	<b>(702) 676-7968</b>	<a href="mailto:dean.rader@encoreglobal.com"><u>dean.rader@encoreglobal.com</u></a>
<b>Lindsey Allen</b>	<b>Director of Sales</b>	<b>(702) 676-6654</b>	<a href="mailto:lindsey.allen@encoreglobal.com"><u>lindsey.allen@encoreglobal.com</u></a>
<b>Omar Gonzalez</b>	<b>Director of Operations</b>	<b>(702) 676-7764</b>	<a href="mailto:omar.gonzalez@encoreglobal.com"><u>omar.gonzalez@encoreglobal.com</u></a>
<b>Nick Moreno</b>	<b>Sr. Sales Manager</b>	<b>(702) 802-7843</b>	<a href="mailto:nick.moreno@encoreglobal.com"><u>nick.moreno@encoreglobal.com</u></a>
<b>Ruben Roybal</b>	<b>Sr. Sales Manager</b>	<b>(702) 676-6654</b>	<a href="mailto:ruben.roybal@encoreglobal.com"><u>ruben.roybal@encoreglobal.com</u></a>
<b>Sam Amoia</b>	<b>Sales Manager</b>	<b>(702) 676-7726</b>	<a href="mailto:savino.amoia@encoreglobal.com"><u>savino.amoia@encoreglobal.com</u></a>

## Scope of Work



Encore is the preferred partner for technical production services at Resorts World Las Vegas. Some services are exclusively provided through Encore. This document contains a detailed description of those services to aid in the planning of your event.

### Rigging

For all event types, locations, and utilization Encore is the exclusive provider of all rigging services including labor, equipment rental, rigging plan approval, and oversight of safety.

The assembly, installation, operation and dismantling of all flown and ground-supported rigging is exclusive to Encore and may only be performed by Encore labor.

All ground-supported items that project more than 16 feet from the floor must be approved by Encore and could require additional safety measures such as safety-ties, additional ballast, etc.

Encore is the exclusive provider of all rigging services including labor, equipment rental (truss, motors, and rigging accessories), rigging plan approval, and oversight of safety. The client shall be responsible for all charges related to rigging equipment rental and handling. Speciality rigging equipment can be accommodated with advanced notification.

All rigging plans, information, drawings, utilization, operation, and equipment must be submitted to and approved by Encore 30 days prior to the event's first day of load in. Incomplete/inaccurate information or late submittal may result in additional costs and/or delays to the event.

### Lighting & Audio/Visual

Encore is the preferred partner for lighting and audio/visual equipment rental and labor but is not the exclusive provider (except for Breakout Meetings).

### General Sessions and Breakout Meetings

Each event is permitted to provide production services which are not exclusive to Encore for one General Session.

Except for one General Session per event all other meetings within an event are considered Breakout Meetings. All equipment, labor, and production services for Breakout Meetings are provided exclusively by Encore. Events for the purpose of receptions, pool functions, or hospitality rooms are not exclusive to Encore.

All events require utilization of an Encore Project Manager to assist in planning and managing the event.

### Lifts & Material Handling

The handling, moving, and delivery of all materials related to the exclusives of Encore shall be provided solely by Encore labor and equipment.

All material lifts and personnel lifts must be operated and rented through Encore.

### Electrical

Encore is the exclusive provider of all equipment and labor for the installation, operation, management, and dismantle of Temporary Electrical Services.

### Managed Network Services

Encore is the exclusive provider of all equipment and labor for the installation, operation, management, and dismantle of Managed Network Services.

### Digital Signage

Encore is the exclusive provider of all equipment and labor for the installation, operation, management, and dismantle of digital signage and advertising space built into the facility's meeting and event space.

[www.encoreglobal.com](http://www.encoreglobal.com)

©2023 Encore. Proprietary and Confidential Information - Not For Further Distribution.

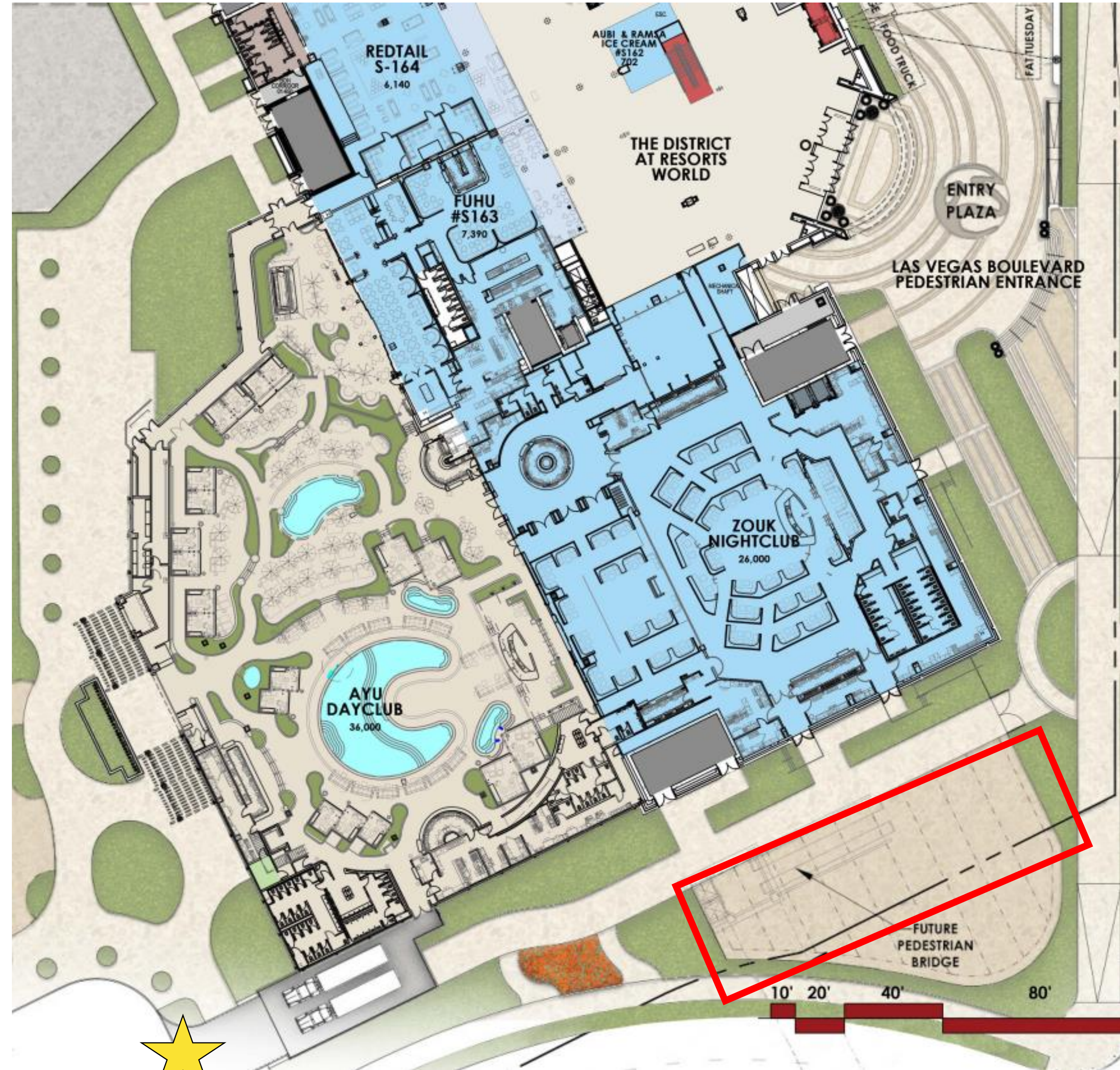
## Driving Directions to Resorts World Zouk/AYU Loading Dock

Going South on Las Vegas Blvd

- Turn Right at the Red Sign labeled AYU Valet/Drop Offs
- Continue down the paved road to the chain link gate, pull through to access Zouk Loading Dock

 = Dock Entrance

 = Loading Dock



# THANK YOU



CATERING AND CONFERENCE SERVICES

SEPTEMBER 10, 2020

2020 ALL RIGHTS RESERVED.